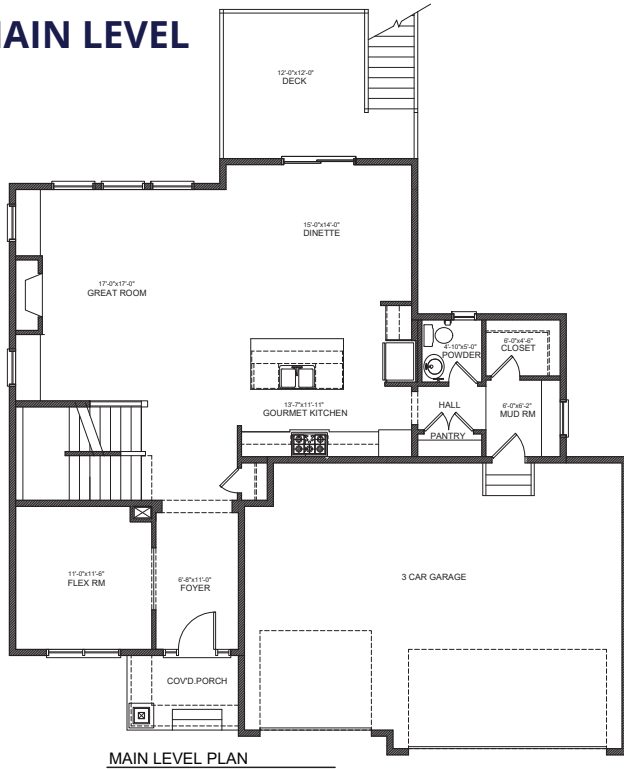
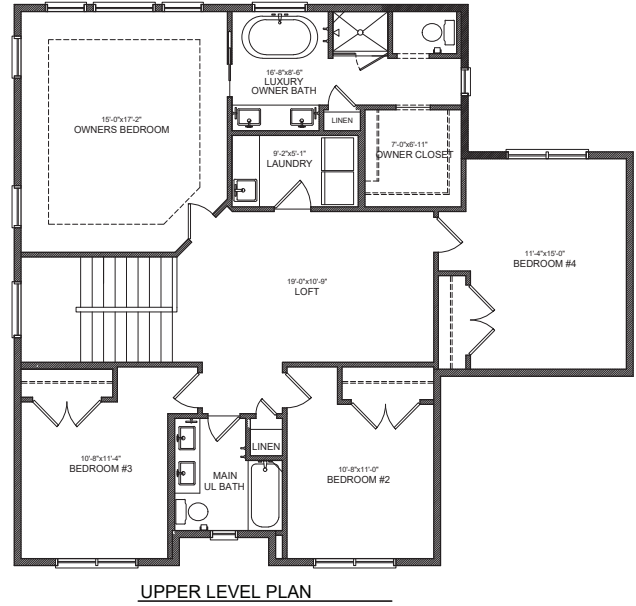


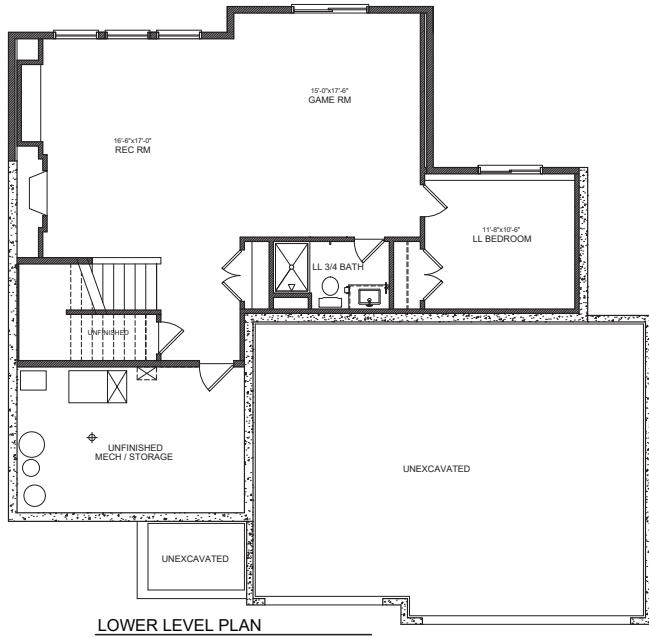
MAIN LEVEL



UPPER LEVEL



LOWER LEVEL



White  Pine
R I D G E

The Marion A
455 Northland Terrace
STILLWATER, MN

5 Bedrooms
4 Baths
3,586 Sq Ft
3-Car Garage

 **STONEGATE**
BUILDERS

STONEGATEBUILDERS.COM

Pricing, specifications, terms and conditions are subject to change without notice. Photographs are for illustrative purposes only and may show options that are not available or for an additional cost. All plan illustrations are artist's concept and are not part of a legal contract. Note that plan square footages and room dimensions may vary according to elevation and options selected. Home is subject to prior sale or withdrawal from the market. E.&O.E. Sept. 2021. See our New Home Specialists for details. License #BC002459

