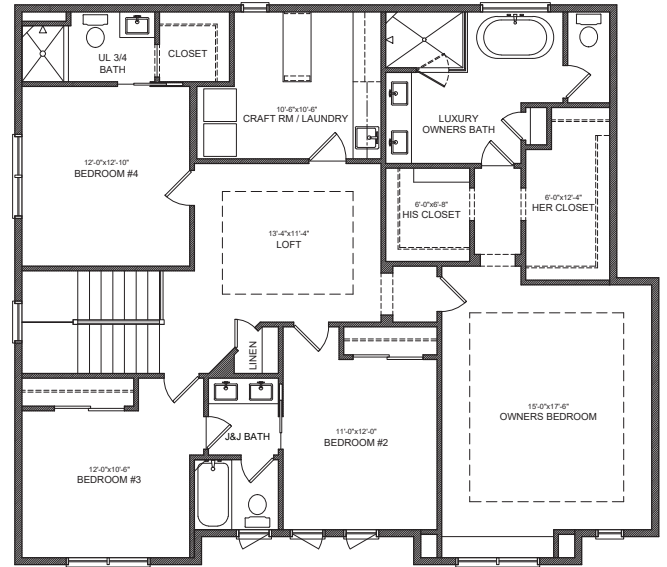


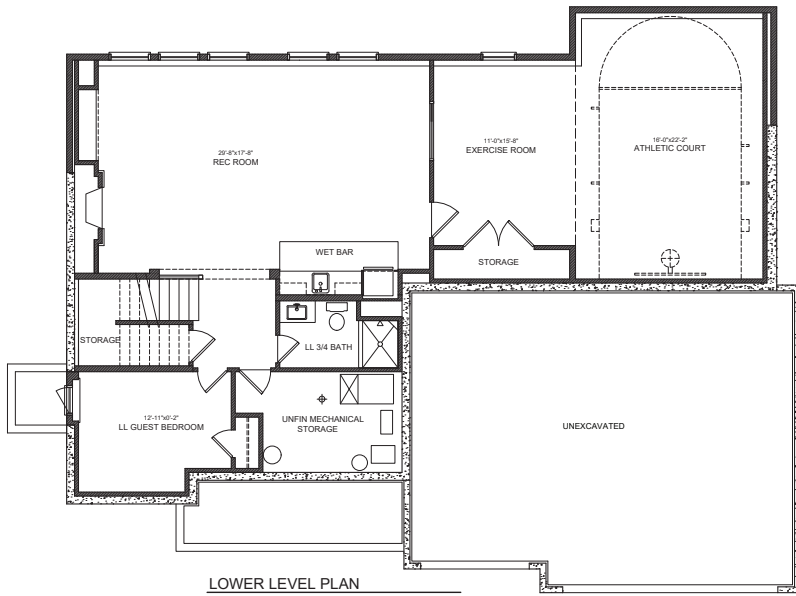
MAIN LEVEL



UPPER LEVEL



LOWER LEVEL



THE RIDGE AT ELM CREEK

6336 Yuma Lane North
MAPLE GROVE, MN

5 Bedrooms
5 Baths
4,786 Sq Ft
3-Car Garage



STONEGATEBUILDERS.COM

Pricing, specifications, terms and conditions are subject to change without notice. Photographs are for illustrative purposes only and may show options that are not available or for an additional cost. All plan illustrations are artist's concept and are not part of a legal contract. Note that plan square footages and room dimensions may vary according to elevation and options selected. Home is subject to prior sale or withdrawal from the market. E.&O.E. March 2022. See our New Home Specialists for details. License #BC002459

