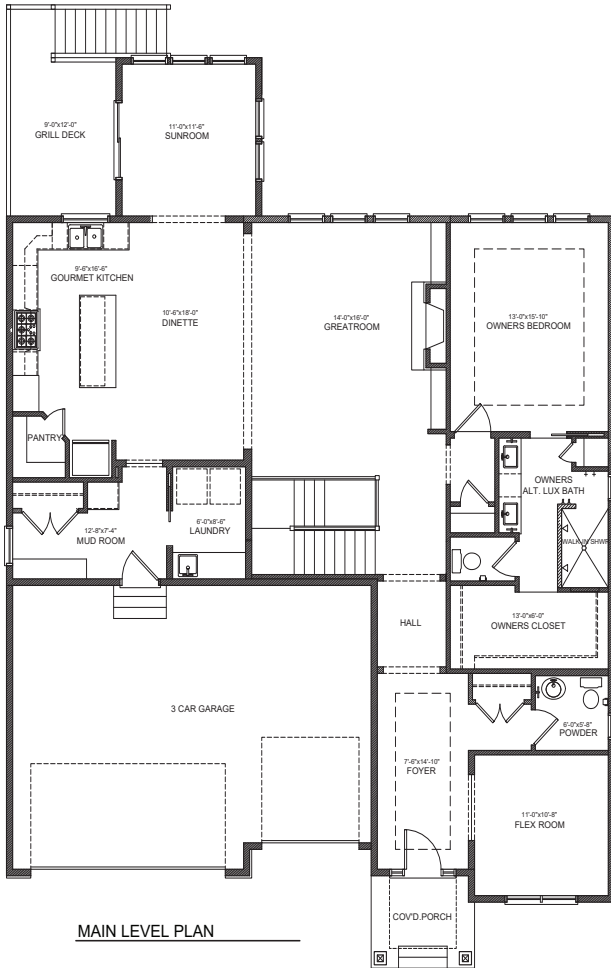
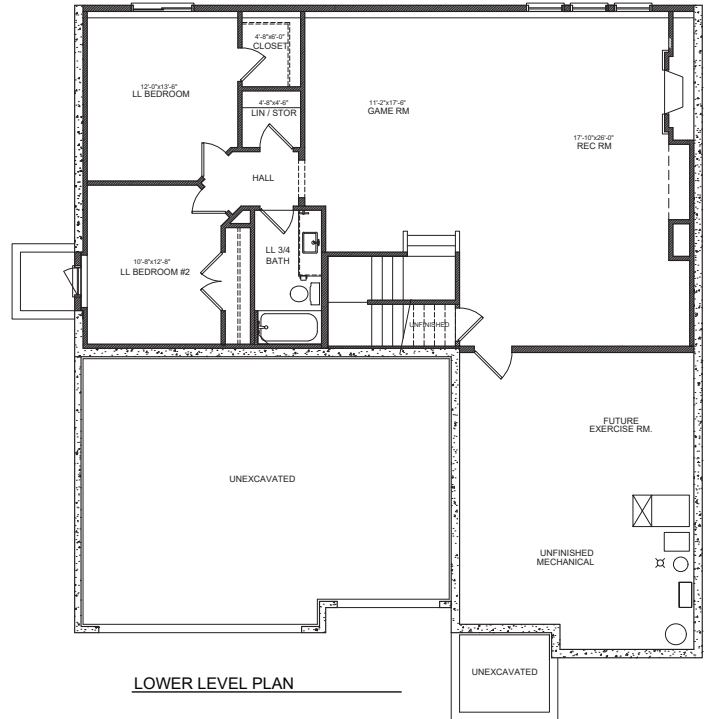


MAIN LEVEL



LOWER LEVEL



The Palmer B
4225 Gable Lane
WOODBURY, MN

3 Bedrooms
3 Baths
3,176 Sq Ft
3-Car Garage



STONEGATEBUILDERS.COM

The improvements, features and specifications of this unit need not be built as depicted. The specific physical characteristics of each unit may differ from each other unit. No express or implied warranty is made in advance that any unit will conform to this depiction, description or model. Each unit will be a custom unit, constructed based on its specific plans and specifications.

Pricing, specifications, terms and conditions are subject to change without notice. Photographs are for illustrative purposes only and may show options that are not available or for an additional cost. All plan illustrations are artist's concept and are not part of a legal contract. Note that plan square footages and room dimensions may vary according to elevation and options selected. Home is subject to prior sale or withdrawal from the market. E.&O.E. Feb. 2023. See our New Home Specialists for details. License #BC002459

